



The Community Forest Nature Preserve

Permitted Activities:

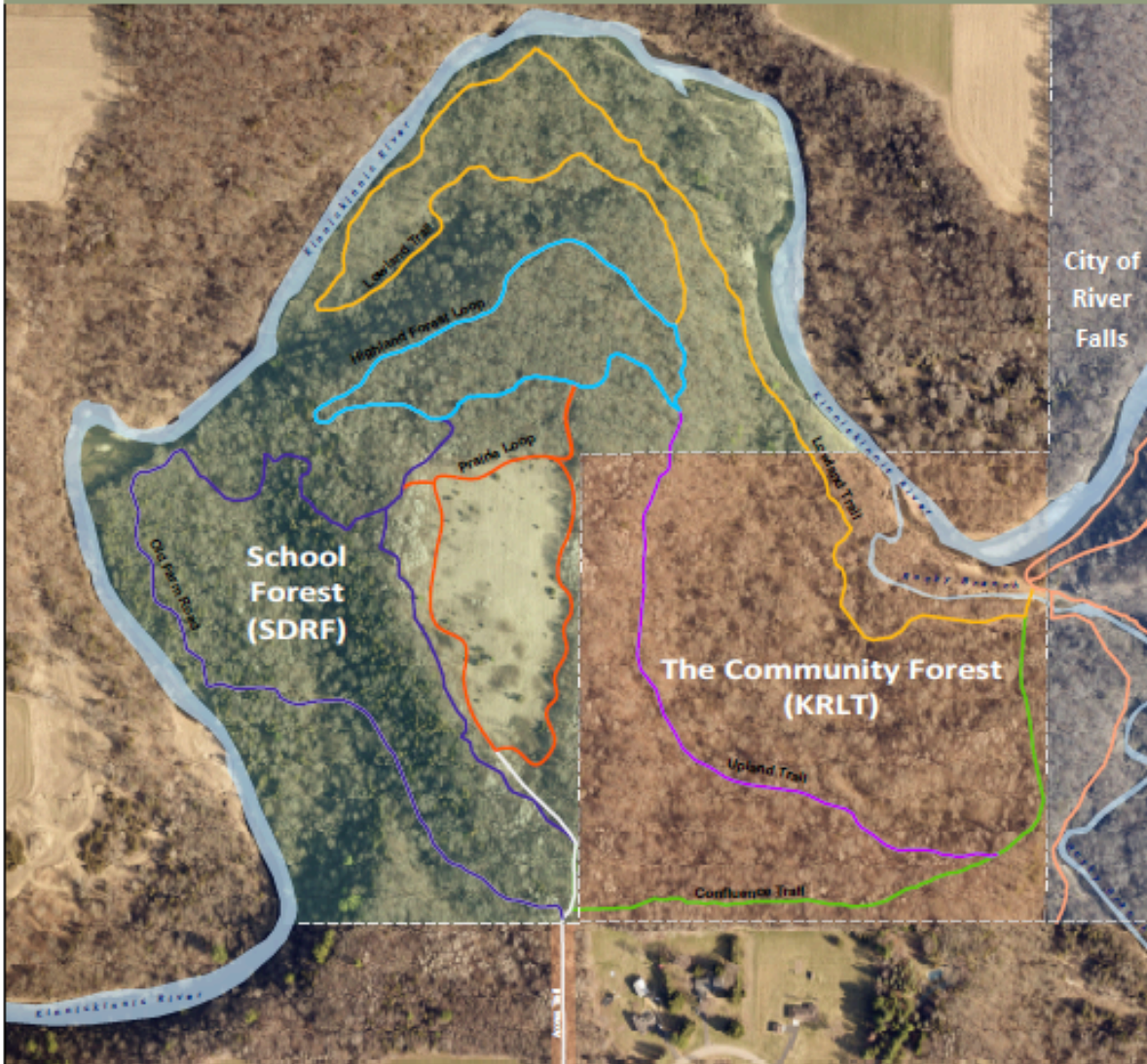
- Wildlife observation and photography.
- Environmental education and interpretation.
- Hiking.
- Fishing according to state regulations.
- Mountain biking.
- Cross-country skiing and snowshoeing.
- Collecting wild edibles for personal consumption according to state regulations.
- For hunting information, please contact our office at 715-425-5738.

Prohibited Activities:

- Unleashed pets.
- Horseback riding.
- Camping, campfires, or overnight use.
- Littering.
- Use of motorized vehicles.
- Firearms or other weapons unless engaged in a legal hunting activity.
- No personal property, including hunting equipment, may be stored overnight. No target shooting allowed.

Please see below for hunting and trapping regulations

All Are Welcome!



Legend

Upland Trail (0.34 M)	City of River Falls
Confluence Trail (0.37 M)	KRLT - The Community Forest
Prairie Loop (0.45 M)	SDRF - School Forest
Highland Forest Loop (0.7M)	
Old Farm Road (0.45 M)	
Access Trail (0.5 M)	
Lowland Trail (1.0 M)	
City of River Falls Trails	
Public Land Boundaries	

Scale: 0 50 100 200 400 Feet
0 0.25 0.5 Miles

Public Use Rules & Regulations:

Permitted:

- Hiking, Fishing, Cross Country Skiing, Snowshoeing
- Wildlife Observation and Photography
- Environmental Education and Interpretation
- Foraging Wild Edibles
- Biking: School Forest: Limited to Prairie Loop only; The Community Forest: Permitted.

Prohibited:

- Unleashed Pets
- Littering
- Horseback Riding
- Unauthorized Motorized Vehicles
- Camping, Campfires, & Overnight Use
- Storage of Personal Property & Unapproved Structures
- Hunting and Trapping are Prohibited on the School Forest
- Firearms and Other Weapons Except for Legal Hunting Activities on The Community Forest (See Back of Kiosk for Hunting Rules)

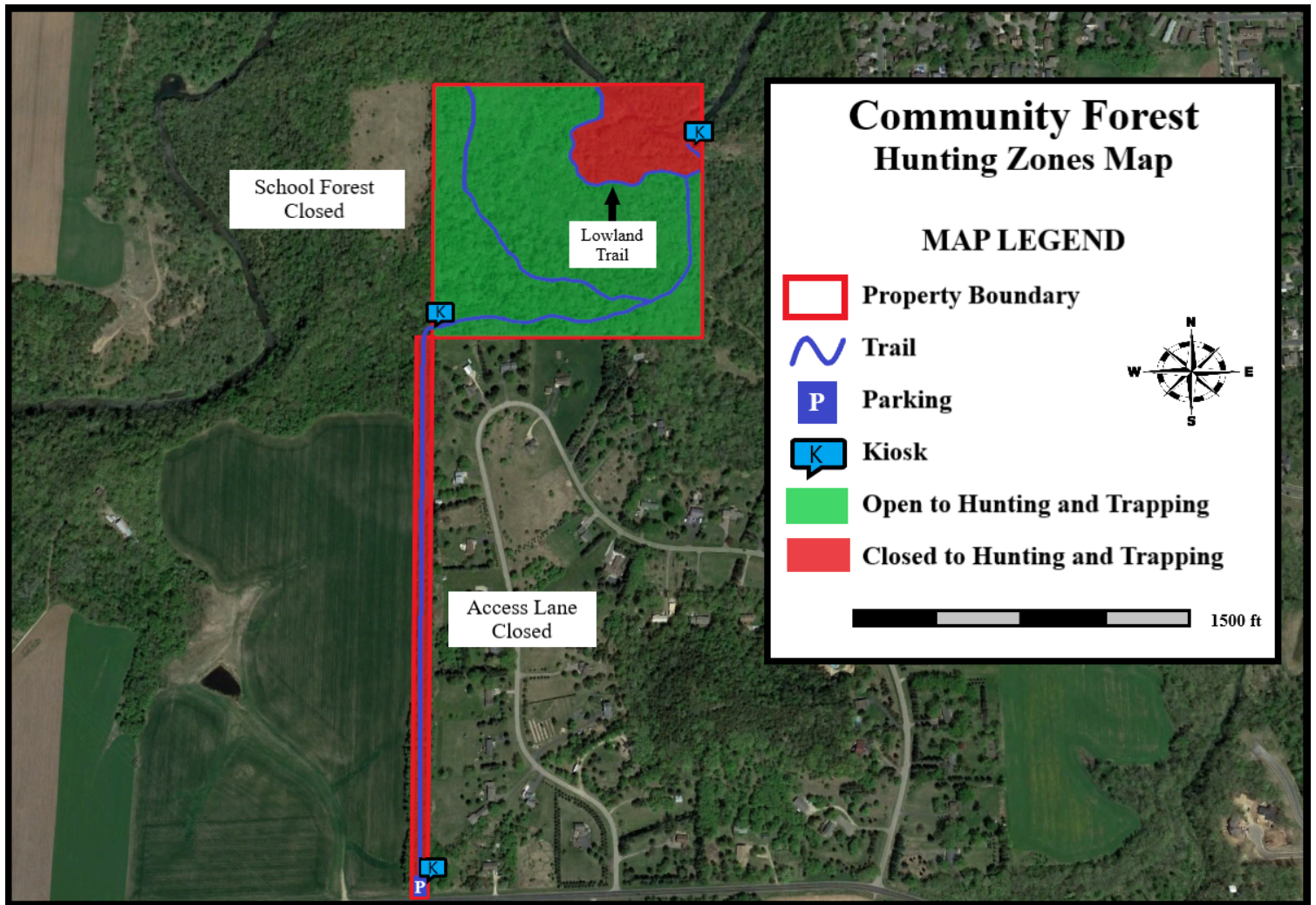
Scan for More Information

You Are Here

County Highway FF

The Community Forest Nature Preserve Hunting and Trapping Rules and Regulations

Public hunting and trapping are NOT permitted on the School District of River Falls – School Forest. Only in the areas indicated in the map below.



Hunting and trapping are allowed on open areas of The Community Forest, as shown on the Hunting and Trapping Map. Caution! The Community Forest abuts a School Forest, residential areas, city parklands and private land. Specific rules for those lands may prohibit possession of firearms, hunting and trapping and/or trespass. Please respect adjoining landowner rights.

For more information on hunting and trapping rules, regulations, and season dates, please refer to The State of Wisconsin Hunting and Trapping Regulations or see the DNR website at <https://dnr.wisconsin.gov/topic/hunt/regulations>

The Community Forest Nature Preserve

Hunting and Trapping Regulations and General Information

- The parking lot and access lane to The Community Forest is closed to Hunting and Trapping (see map).
- Areas designated as high use areas are closed to Hunting and Trapping (see map).
- Off-road motor vehicle use is prohibited.
- Certain exemptions from rules are allowed for Class A and certain Class B disabled hunters. Contact the Kinnickinnic River Land Trust office for more information (phone 715-425-5738).
- All pets must remain on a leash at all times.
- Non-hunting visitors are also enjoying The Community Forest during the hunting and trapping season; they may or may not be wearing blaze orange. Make sure you know where closed areas, buildings, school grounds, and trails are located to avoid user conflicts. Hunters should be especially aware of gun safety and be certain of your target and what is beyond it.
- Future local or state ordinances may apply within the boundaries of The Community Forest Property prohibiting actions such as the possession or discharge of firearms. Please contact the Kinnickinnic River Land Trust office for more information (phone 715-425-5738).
- Please respect private lands near the Community Forest while enjoying the outdoors.
- You are responsible for undertaking your recreational activity in a safe and legal manner.

It is illegal to:

- Discharge a firearm, bow, crossbow, or air gun from, on, or across a designated trail (see map or designated trails).
- Shoot a firearm within 100 yards of a building devoted to human occupancy on lands you do not own without permission.
- Take, catch, kill, hunt, trap or pursue any wild animal or bird, or discharge any firearm on The Community Forest area closed to hunting and trapping.
- Target shoot on The Community Forest.
- Park in The Community Forest parking lot over-night.
- Camp any-where on The Community Forest.
- Start fires or have campfires on the Community Forest.
- Store personal property on The Community Forest.

Tree Stands and Hunting Blinds:

- Only portable tree stands and hunting blinds are permitted and must be removed daily after use.
- Damaging trees, cutting shooting lanes, marking trees, and use of screw-in tree-stands or steps are considered damaging and are illegal.

Trapping:

- Trapping is prohibited in all closed areas (see map).
- Trapping is allowed in all open areas, except within 100 yards of a designated trail or other designated high use areas, such as The Community Forest parking lot and access lane and designated high use area by the river, as shown on the hunting and trapping map.
- No person may place a trap on dry land unless the trap is an enclosed trigger trap.